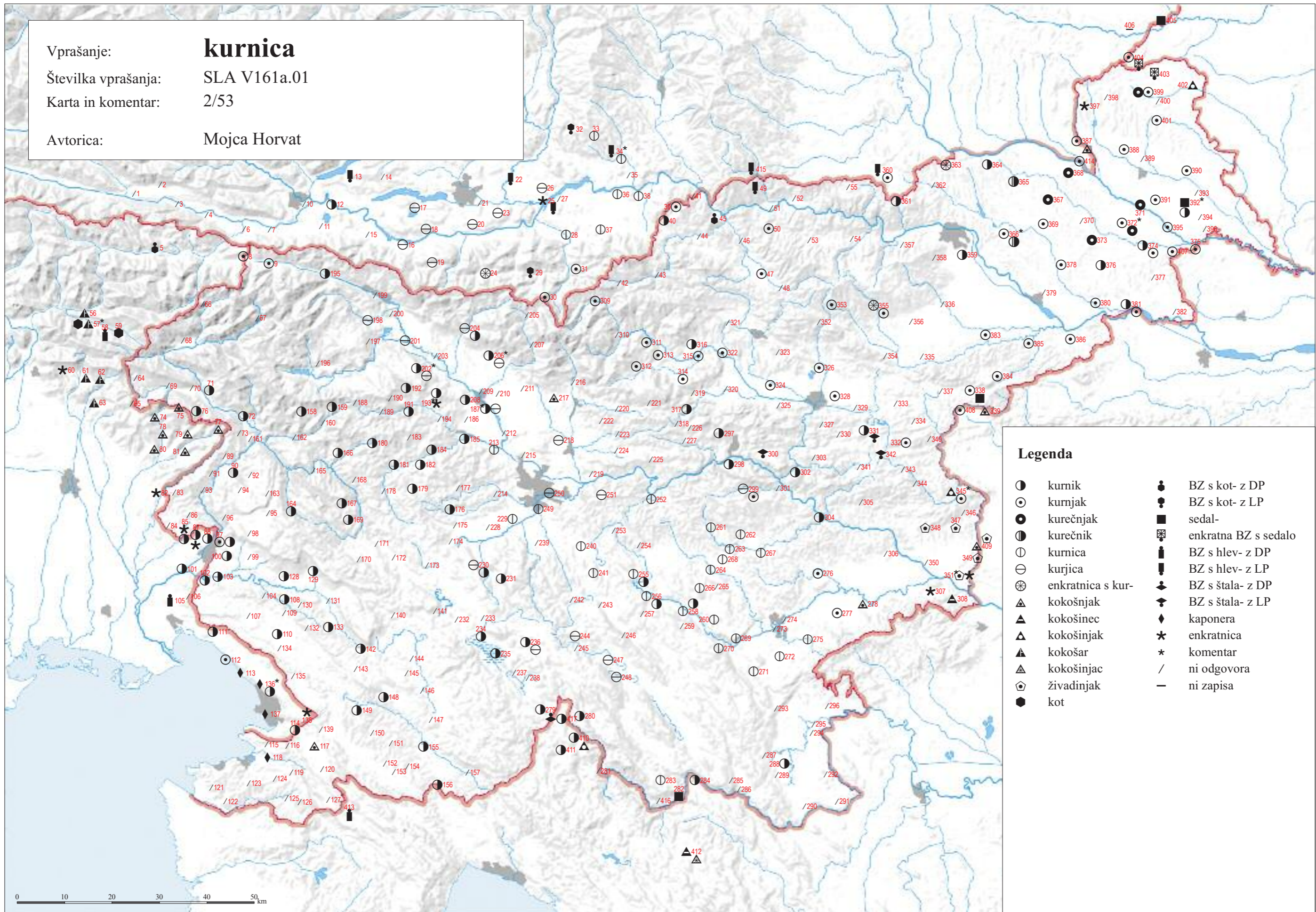


Vprašanje: **kurnica**  
 Številka vprašanja: SLA V161a.01  
 Karta in komentar: 2/53  
 Avtorica: Mojca Horvat



- Legenda**
- |   |                   |   |                      |
|---|-------------------|---|----------------------|
| ● | kurnik            | ● | BZ s kot- z DP       |
| ○ | kurnjak           | ● | BZ s kot- z LP       |
| ● | kurečnjak         | ■ | sedalo               |
| ● | kurečnik          | ⊠ | enkratna BZ s sedalo |
| ○ | kurnica           | ⊠ | BZ s hlev- z DP      |
| ⊖ | kurjica           | ⊠ | BZ s hlev- z LP      |
| ⊗ | enkratnica s kur- | ⊠ | BZ s štala- z DP     |
| ▲ | kokošnjak         | ⊠ | BZ s štala- z LP     |
| ▲ | kokošinec         | ◆ | kaponera             |
| ▲ | kokošinjak        | ★ | enkratnica           |
| ▲ | kokošar           | * | komentar             |
| ▲ | kokošinjac        | / | ni odgovora          |
| ⬠ | živadinjak        | — | ni zapisa            |
| ● | kot               |   |                      |